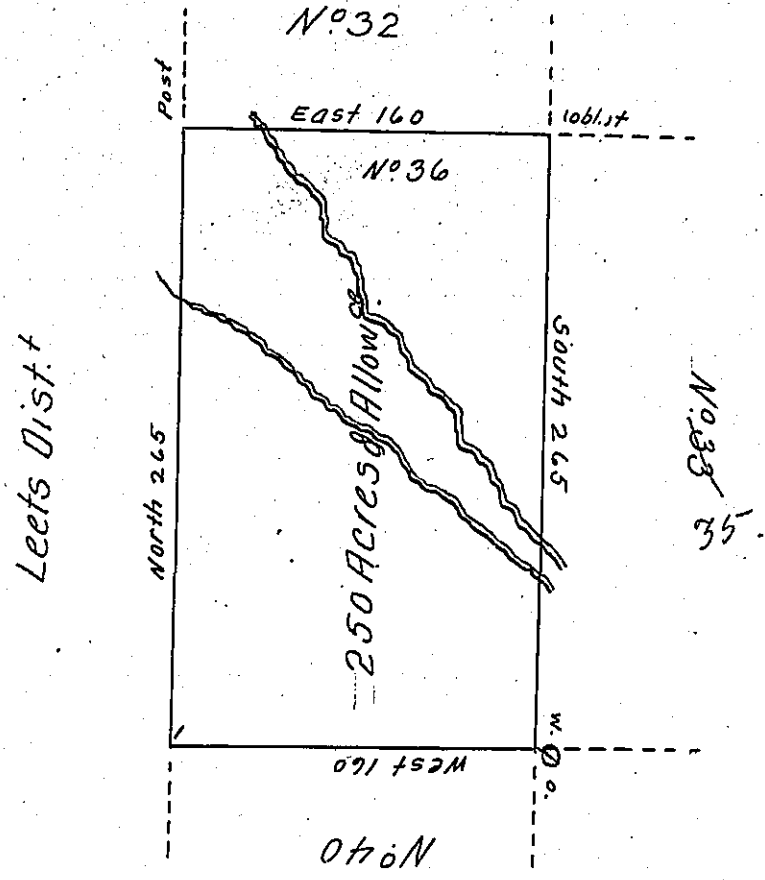


✓



Situate on the Waters of Camp Creek Between the Eighth & Ninth Parallel in that Part of District No 3 to me Allotted on the North side of the River Ohio being Part of the Land Appropriated for the Redemption of the Certificates of Depreciation &c<sup>a</sup> Survey'd in June 1785 Pursuant to Instructions from Jn<sup>o</sup> Lukens Esq<sup>r</sup> Surveyor Gen<sup>l</sup> dated at Philad<sup>a</sup> 5<sup>th</sup> March 1785.

Wm<sup>l</sup> Breeding D.S.

IN TESTIMONY that the above is a copy of the original remaining on file in the Department of Internal Affairs of Pennsylvania, made conformably to an Act of Assembly approved the 16th day of February, 1833, I have hereunto set my Hand and caused the Seal of said Department to be affixed at Harrisburg, this first day of November 1906.

*Wm. A. R. ...*  
Secretary of Internal Affairs